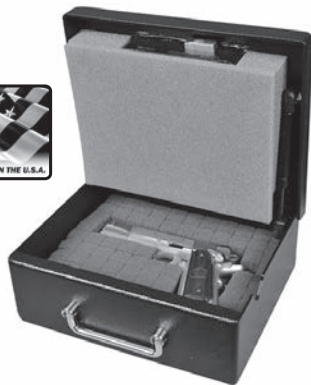




HANDGUN SECURITY

HANDGUN SECURITY



**PS1210HD
Heavy-Duty Handgun Safe**

Safe features:

- High strength 10 ga solid steel body.
- Massive 3/16 steel door with two solid steel dead bars and gas piston for easy opening.
- Welded and concealed continuous hinge
- Reliable fast access Simplex push button mechanical locking device
- Strong, pry-resistant locking bolt
- Locking mechanism protected by steel housing,

- impervious to punch attacks
- Charcoal gray textured finish with chrome hardware
- Heavy-duty chrome carrying handle
- Protective high density pluck foam-lined interior.
- Four pre-drilled bolt down holes
- Packaged for UPS/FedEx shipments
- Made in the USA

Exterior Dimensions	Weight
10.25" x 12.5" x 4.25"	24 lbs

**NEW! PS1210EZ
Easy-Carry Handgun Safe**

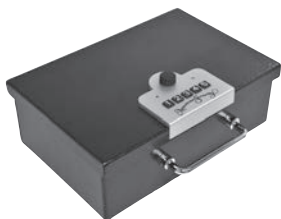
Safe features:

- Body and door constructed of 14-gauge solid steel plate
- Strong pry resistant locking bolt and dead bars on the door
- Welded and concealed continuous hinge
- Reliable fast access Simplex push button mechanical locking device

- Locking mechanism protected by steel housing, impervious to punch attacks
- Charcoal gray textured finish with chrome hardware
- Heavy-duty chrome carrying handle
- Protective high density pluck foam-lined interior
- Four pre-drilled bolt down holes
- Packaged for UPS/FedEx shipments



Exterior Dimensions	Weight
10.25" x 12.5" x 4.25"	13 lbs



PB3 Handgun Safe

Safe features:

- Deep blue textured finish with chrome hardware.
- Heavy-duty chrome handle.
- Strong, pry-resistant chrome locking bolt.
- Interior cushioned with foam lining to protect against scratches.

- Easy to change combination with programmable override code.
- Four (4) AA batteries provides over 5,000 openings with low-battery indicator.
- External auxiliary battery connection.
- Tamper-proof penalty lockout protects against manipulation attempts.
- Pre-punched holes enable the case to be installed directly to most surfaces.

Exterior Dimensions	Weight
8h x 12w x 4d	10 lbs

**NEW! HAS410
Hide-a-Safe**

Safe Features

- Door constructed of 7GA solid steel plate with a strong pry resistant locking bolt
- Body constructed of 10GA solid steel plate with mounting holes for top or bottom installation
- Reliable fast access Simplex push button mechanical locking device

- Locking mechanism protected by steel housing, impervious to punch attacks
- Heavy Duty 75lb rated slides (55lb rated when fully extended)
- Charcoal gray textured finish with chrome hardware
- Fabric-lined drawer with protective high density pluck foam-lined interior
- Packaged for UPS/FedEx shipments



Exterior Dimensions	Weight
4"h x 10"w x 12"d	20 lbs



IRC412 Drawer Safe

Safe features:

- Heavy duty steel construction offers excellent burglary protection.
- Convenient motorized locking system, incorporating the latest technology.
- Easy to read, large LED display lets you know the status of the safe.
- Reliable ADA approved keypad.
- 4 to 6 digit combination, standard hotel room configuration (customer sets new

combination every time safe is used, quickly and easily), or electronic credit card.

- Lock-out penalty if the combination is entered wrong, the safe will lock up for 5 minutes, frustrating the would-be burglar.
- Emergency key-lock override system with 2 keys.
- Fits in a drawer and only requires 5" clearance
- Spacious interior fits tablets and compact lap top computers.

Exterior Dimensions	Weight
4.5 h x 12 w x 14d	15 lbs