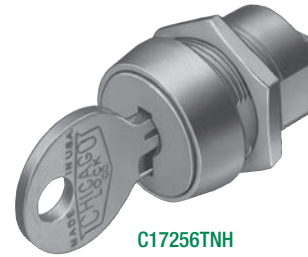


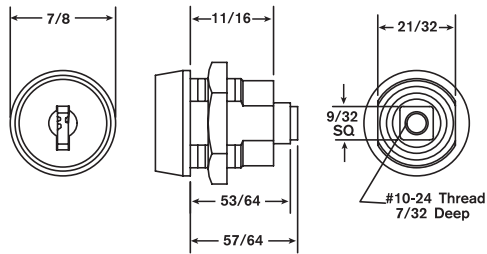
SPECIAL PURPOSE LOCKS

DRAWER & DOOR

- Six disc tumbler plug in $\frac{3}{4}$ " diameter.
- Die cast barrel with two flats — $\frac{21}{32}$ " across.
- Key and cam rotation 90° from locked (12 O'Clock) to unlocked (3 O'Clock) position with keypull in both positions.
- This lock designed to be used with customer's latching mechanism.
- Satin Nickel finish.
- Two keys per lock.
- DK-101-H key blank.



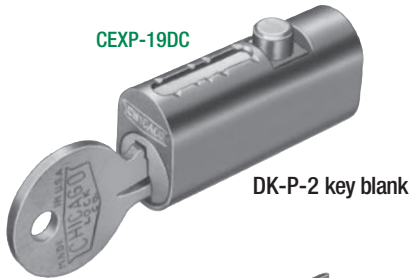
C17256TNH



Lock No.	KA Codes	KD Changes
C17256TNH	1101X	150

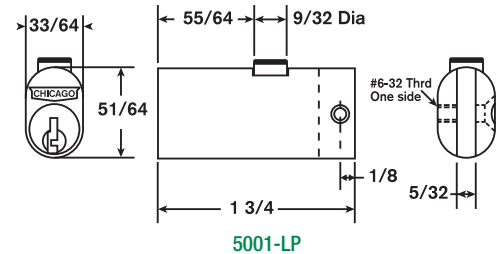
FILING CABINET

CEXP-19DC

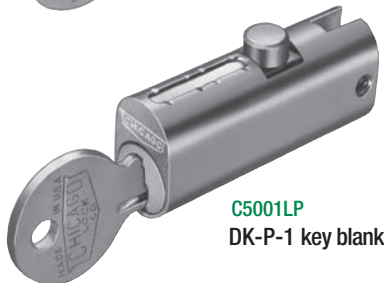


DK-P-2 key blank

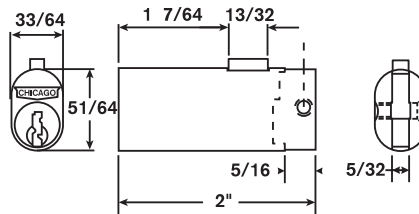
- Four pin tumbler plug.
- Die cast barrel with die cast bolt.
- 5002LP has rectangular bolt.
- Other models have round bolt.
- Satin Chrome finish.
- Two keys per lock.



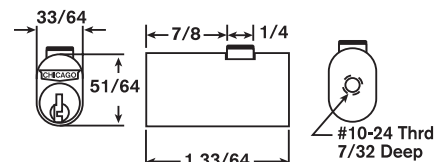
5001-LP



C5001LP
DK-P-1 key blank



5002-LP
DK-P-1 key blank



EXP-19DC

Lock No.	"A" Dim.	"Bolt" Dim.	"D" Dim.	"O.A." Dim.	"W" Dim.	KA Codes	KD Changes
C5001LP	$\frac{55}{64}$ "	$\frac{9}{32}$ " dia.	$\frac{5}{16}$ "	$1\frac{3}{4}$ "	$\frac{5}{32}$ "	1X03 3X5 1X04 2X01	200
C5002LP*	$\frac{17}{64}$ "	$\frac{27}{64}$ " x $\frac{9}{64}$ "	$\frac{5}{16}$ "	2"	$\frac{5}{32}$ "	1X20 2X02	200
CEXP-19DC	$\frac{7}{8}$ "	$\frac{1}{4}$ " dia.	NA	$1\frac{33}{64}$ "	NA	5X75	200

* To order replacement locks for Steelcase equipment, specify 5002LP, KA# CL-S100.

Steelcase is a registered trademark of Steelcase, Inc., Grand Rapids, Michigan.