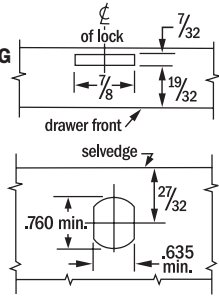


pin tumbler drawer locks



MOUNTING HOLES



New for March 2013 – C8137 lock with STAINLESS STEEL bolt!

The stainless steel bolt withstands a higher degree of abuse and is a direct replacement for existing C8137 with die-cast bolts.

APPLICATION – For center drawers of metal desks. Fits special piercing of drawer front and seldge (see drawing).

OPERATION – Key removable in both locked and unlocked positions.

KEYING – Will key together with most other pin tumbler locks using D4291 key blank. See table for available keying. Master keying to GM1.

PACKAGING – Supplied with two keys, mounting nut and stainless steel insertable bolt. **Part No.:** C7137 – Stainless steel replacement insertable bolts. M337272116X150J – Die-cast replacement insertable bolts.

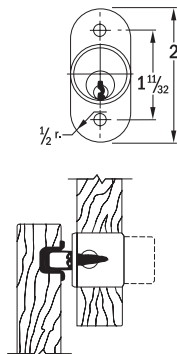
Part No.	Installation	Bolt Type	Cylinder Length	Bolt Travel	KA* Codes	Key Changes		Reference Number	Key Blank
						KD	MKKD		
C8137-26D	Metal Drawer, 1/4" Max Mat'l Thickness	Stainless steel Insertable Dead Bolt	19/32"	7/16"	4	850	650	M2-3727-001	D4291

*Key Codes used: 4 Codes – 101, 103, 107 and 915.

pin tumbler sliding door, file cabinet locks



**C8142
C8143**



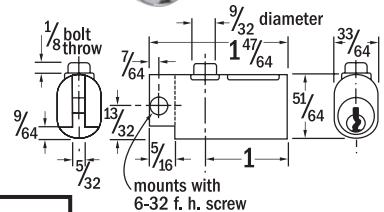
APPLICATION – C8140 is for sliding glass doors. C8142 and C8143 are for wood sliding doors and require a 7/8" diameter hole in front door for cylinder. C8150 is used internally on filing cabinets to gang lock drawers.

OPERATION – C8140 and C8150: key removable in locked position only. C8142 and C8143: key removable in both locked and unlocked positions.

KEYING – Will key together with most other pin tumbler locks using D4291 key blank. See table for available keying. Master keying to GM1. **PACKAGING** – Supplied with two keys. C8142 and C8143 furnished with strike and mounting screws. If trim ring is required, order C2017 separately.



C8150



Part No.	Installation	Bolt Type	Cylinder Length	Bolt Travel	KA* Codes	Key Changes		Reference Number	Key Blank
						KD	MKKD		
C8140-26D	Plate Glass Sliding Doors	Internal Spring	—	—	4	100	—	M2-0225-001	D4291
C8142-26D	Sliding Doors	Plunger	1-1/8"	7/16"	6	100	100	M2-3707-157	D4291
C8142-4	Sliding Doors	Plunger	1-1/8"	7/16"	2	100	—	M2-3707-157	D4291
C8143-26D	Sliding Doors	Plunger	1-3/8"	7/16"	4	100	—	M2-3707-160	D4291
C8143-4	Sliding Doors	Plunger	1-3/8"	7/16"	2	100	—	M2-3707-160	D4291
C8150-26D	Filing Cabinet	Spring	—	1/8"	5	850	—	M2-4847-001	D4291

*Key Codes used: 2 Codes – 107 and 915.

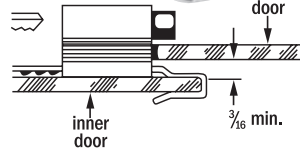
4 Codes – 101, 103, 107 and 915.

5 Codes – 101, 102, 103, 107 and 915.

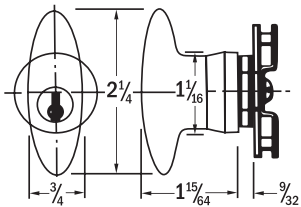
6 Codes – 101, 103, 105, 106, 107 and 915.



C8140



pin tumbler knob locks

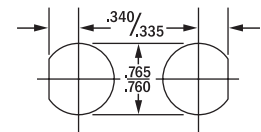


APPLICATION – For metal cabinets doors. Reversible for R.H. or L.H. application. Latch plate is used for either in 2** or 3 point latching.

OPERATION – 90° turn to open. Choice of key operation, see table.

KEYING – Will key together with most other pin tumbler locks using D4291 key blank. See table for available keying. Master keying to GM1. **PACKAGING** – Supplied with two keys, mounting nut and screw for latch plate.

**Install with tongue pointing away from jamb.



**L.H. Door R.H. Door
MOUNTING HOLES**



C8154, C8155

Part No.	Installation	Operation of Key	Maximum Material Thickness	KA* Codes	Key Changes KD	Reference Number	Key Blank
C8154-26D	Door	Key Removable in Both Locked and Unlocked Positions	1/8"	3	650	M2-0721-010 w/M3-6921	D4291
C8155-26D	Door	Key Removable in Locked Position Only	1/8"	1	650	M2-0721-060 w/M3-6921	D4291

*Key Codes used: 1 Code – 915.

3 Codes – 103, 107 and 915.