

MAGNETIC LOCKS

ML-1549W

1200+ lb. Weatherized Electromagnetic Lock

The Detex ML-1549W Weatherized Series, Grade 1 Magnetic Locks provide approximately 1200 lbs. of holding force to the separation point. Positive, instantaneous failsafe operation is guaranteed, with no moving parts to bind or wear, the ML-1549W Series will release immediately when de-energized by Fire Life Safety System or remote controls.



Benefits

- Easy mounting, time saving installation
- Weatherized for use in the harshest conditions
- Wiring may be run before or after installation of lock
- 1200 lbs of holding force deters unauthorized entry
- Floating armature design compensates for gate/door misalignment with the electromagnet
- Maintenance free operation with no moving parts

Features

- Stainless Steel Case
- Epoxy filled for weather resistance
- Non-handed
- Failsafe operation unlocks in a power outage
- Threaded couduit fitting
- Built-in bond sensor

Electrical Options

- Dual 12/24 VDC field selectable voltage

Accessories

- Various brackets (call factory)

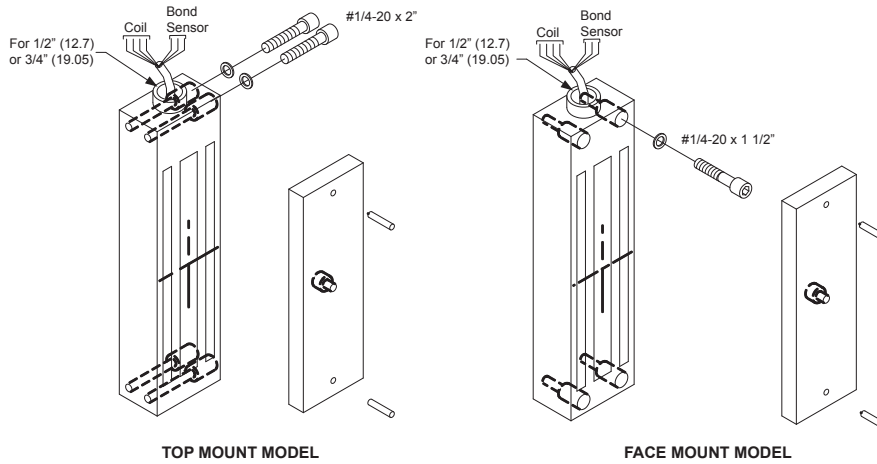
Technical Information

- All steel magnetic core construction
- .225mA @ 24VDC, .450mA @ 12VDC

Finishes (Advantex)

- 630 - Stainless Steel

Mounting Diagram



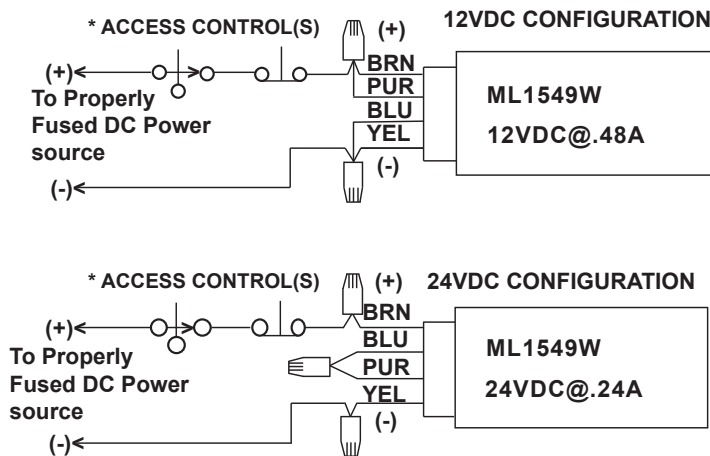
Dimensions

- Magnetic Lock -
1.61" D x 2.5" W x 8.66" L
- Armature -
.63" D x 2.40" W x 7.283" L

Detex Limited Warranty

1 Year Limited Manufacturers
Warranty

12VDC and 24VDC Configurations



Listings and Approvals



Where Trust is Built™

DETEX®

Life Safety, Security and Security Assurance

Detex Corporation
302 Detex Drive
New Braunfels, Texas 78130-3045 USA
PH. (830) 629-2900
(800) 729-3839
FAX (800) 653-3839
<http://www.detex.com>
USA Sales:
marketing@detex.com
International Sales:
export@detex.com

⚠ Cancer & Reproductive Harm - www.detex.com/prop65