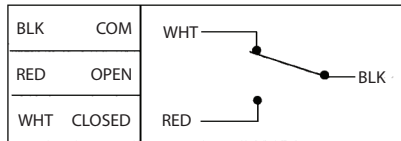


Detex Corporation, 302 Detex Drive, New Braunfels, Texas 78130 (830)629-2900 1-800-729-3839 FAX (830)620-6711
 E-Mail: detex@detex.com Internet: www.detex.com

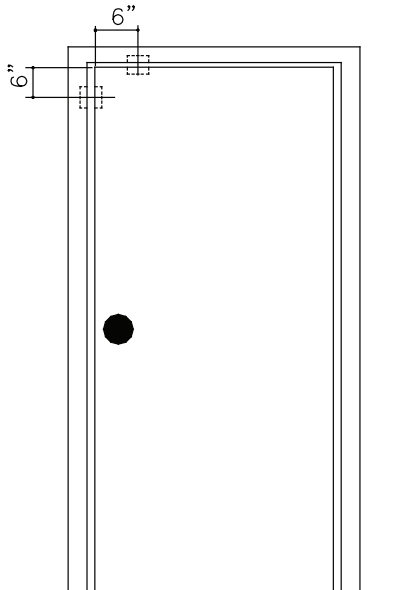
INSTALLATION INSTRUCTIONS FOR MAGNETIC SWITCH MS-2049F

ELECTRICAL SPECIFICATIONS

SWITCH (SPDT)
 MAXIMUM CONTACT RATING;
 500 mA at 24V



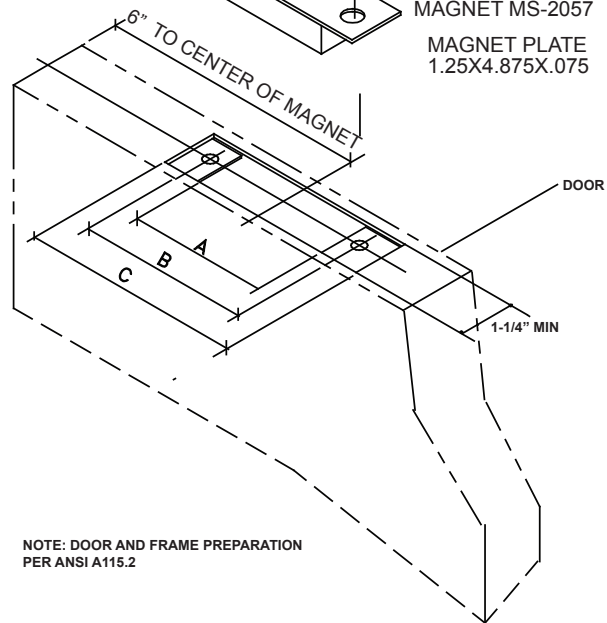
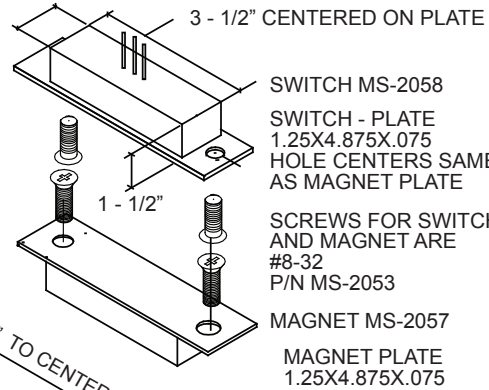
SHOWN DOOR SECURE



MS-2049F POSITION

The preferred position of the magnetic switch is the top of the door, centered approximately 6" from the edge of the door, as shown. Contacts should be installed so that the door cannot be opened more than 2 inches without causing an alarm condition.

1 - 1/16"



NOTE: DOOR AND FRAME PREPARATION
 PER ANSI A115.2

DIMENSIONS:

A = 3-1/2" MIN B = 4-1/8" C = 4-15/16" MIN

NOTE: The dimensions given in the illustration apply to the door and frame preparation for top of door or latch side installation.

Special screws, #8-32 x 1/4" flat head are provided.

Special attention must be given to the alignment of the switch and magnet, especially longitudinal. The maximum allowable misalignment in any direction is 1/8".