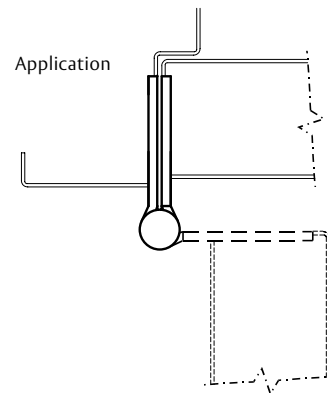
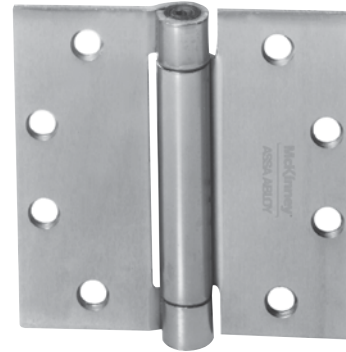


Standard Weight Spring Hinge

Recommended for standard weight, medium frequency doors in place of door closers in apartments, hotels, motels, office buildings, etc.

- Spring hinges are an alternative to door closing devices. Generally two hinges on the door must be spring hinges to provide adequate closing force. NFPA requires a minimum of two (2) spring hinges on labeled doors
- This non-handed spring hinge series is adjustable and tension can be added or reduced by means of a hex key that is provided
- Locking screw provides tamper-resistance after the proper tension has been set. For unparalleled tamper resistance and security choose the TRS option
- Caution: Use of gasketing for smoke or sound protection, wind conditions or unbalanced air pressure, twisted or misaligned frames or doors, door bottoms, improper latch adjustment may prevent doors from latching. Additional spring hinges may be required.
- For available finishes see page 29

1502
1552



No.	ANSI Cross Reference	Base Material	Weight
1502	K81081	Steel	STD
1502	K81081F	Steel	STD
1552	K51071	Stainless Steel	STD
1552	K51071F	Stainless Steel	STD

Specifications

Inches	mm	Gauge	No. of Holes	Fasteners	
				Machine	Wood
4" x 4"*	101.6 x 101.6	.130	8	1/2 x 12-24	1 1/4 x 12
4 1/2" x 4"	114.3 x 101.6	.134	8	1/2 x 12-24	1 1/4 x 12
4 1/2" x 4 1/2"	114.3 x 114.3	.134	8	1/2 x 12-24	1 1/4 x 12

*Not available in 1552.

Options:

Code	Description
RC	Round corner - 1/4" radius furnished unless specified otherwise
HT	Hospital Tip - on one side only*
1502-R	Reverse Spring Option (maintains the door in the open position)*
TRS	Tamper Resistant Option**

* Voids the UL® listing.

** A tamper resistant screw is screwed into the tension ratchet after the proper tension has been set.

ASSA ABLOY

The global leader in door opening solutions