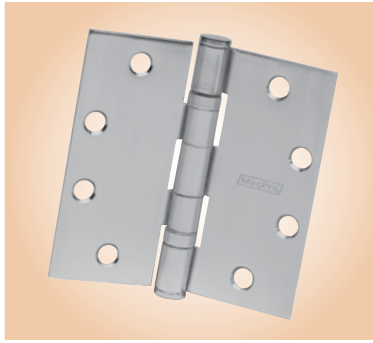


MACPRO[®] by McKinney



Applications:

- Apartments
- Hotels / Motels
- Dormitories
- Office Buildings

McKinney Gets The Job Done Right

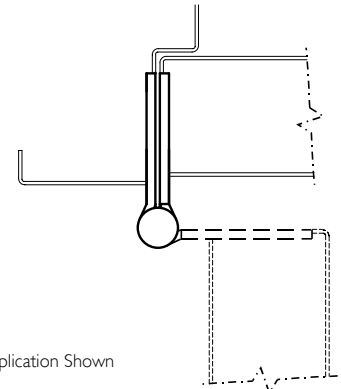
MacPro by McKinney offers contractor grade hinges to get the job done right. High quality and competitive prices equal an extraordinary value, ideal when large quantities of standard hinges are needed.

MacPro hinges include non-bearing and bearing hinges. For doors with a closing device, a bearing hinge must be used. For heavier doors with closing devices, select a heavy weight bearing hinge. Choose Stainless Steel for situations where hinges are exposed to the elements. Choose the NRP (Non-Removable Pin) option in situations where tampering may be an issue.

MacPro by McKinney templated hinges are made to conform to ANSI/BHMA 156.1, 156.7.

Features & Benefits

| | |
|-------------------------------------|--|
| Quality materials and craftsmanship | Product is reliable and easy to install |
| Durable construction | Low frequency of breakage and repairs |
| Competitive price | Complete the job within budget |
| Choice of finishes | Match existing hardware |
| Standard and heavy weight hinges | Match the right hinge to the application |
| Installation screws included | Quick installation with proper hardware |
| 3-Day QuickShip Program | Complete the job on time |



Application Shown

Specifications

| Catalog Number | Size | Hinge Type | Base Material | Gauge | Weight | Finish | Options |
|----------------|---------------|-------------------------------------|---------------|-------|--------|-----------------------|---------|
| MP79 | 4-1/2 x 4 | Non-Bearing Hinge | Steel | .134 | STD | P, 4, 26D | NRP |
| MP79 | 4-1/2 x 4-1/2 | Non-Bearing Hinge | Steel | .134 | STD | P, 3, 4, 26, 26D | NRP |
| MPB79 | 4-1/2 x 4 | Bearing Hinge | Steel | .134 | STD | P, 4, 26D | NRP |
| MPB79 | 4-1/2 x 4-1/2 | Bearing Hinge | Steel | .134 | STD | P, 3, 4, 10B, 26, 26D | NRP |
| MPS60 | 4-1/2 x 4-1/2 | Spring Hinge | Steel | .134 | STD | P, 26D | |
| MP679 | 4-1/2 x 4-1/2 | 2 Spring Hinges and 1 Bearing Hinge | Steel | .134 | STD | 26D | |
| MPB68 | 4-1/2 x 4-1/2 | Bearing | Steel | .180 | HVY | 26D | NRP |
| MPB91 | 4-1/2 x 4-1/2 | Bearing | Stainless | .134 | STD | 32D | NRP |
| MPB99 | 4-1/2 x 4-1/2 | Bearing | Stainless | .180 | HVY | 32D | NRP |