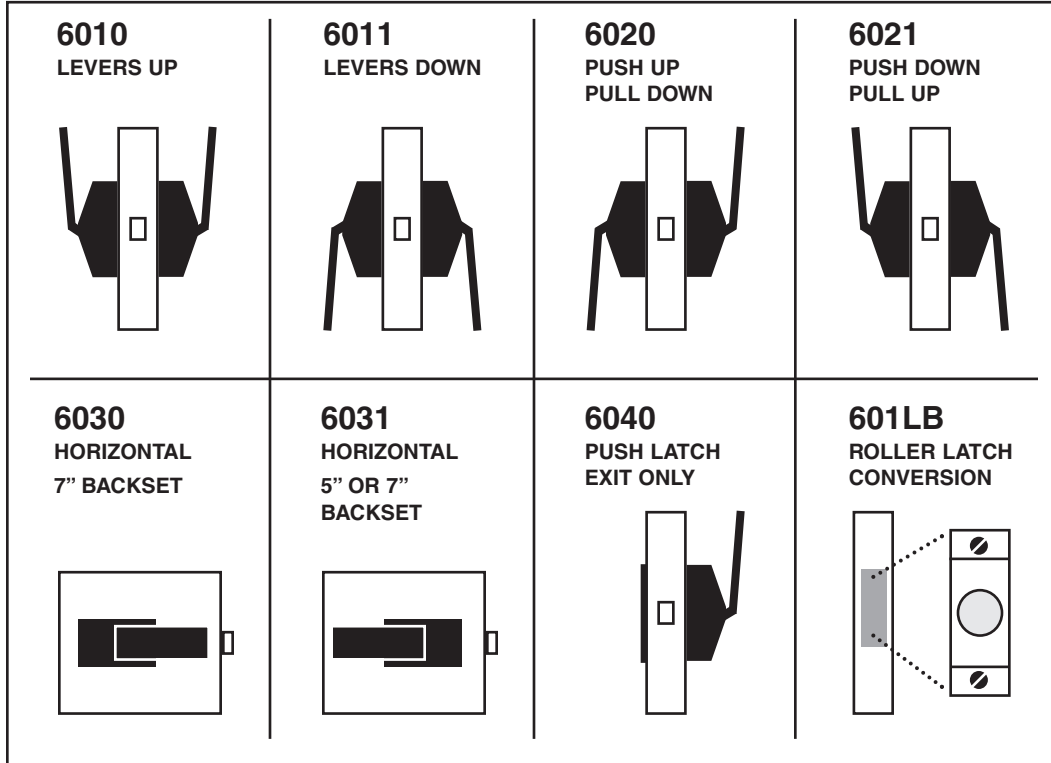


6000 SERIES PUSH-PULL LATCH



- Non-handed (except for engraved models). **SEE NOTE BELOW.***
- Push/pull latch can be mounted with the handles up, down or horizontal without any modification.
- Available with 2 3/4", 5" or 7" backset latches.
- Standard or ASA strike.
- Includes all required fasteners.
- Compact non-handed covers provide maximum clearance between the handle and door.
- UL listed for all fire doors.
- Available in BHMA finishes.
- Lead lining is available.
- Available latch bracket for Roller to Push Pull conversion.
- Meets ADA requirements.
- Standard for 1 3/4" thick doors.



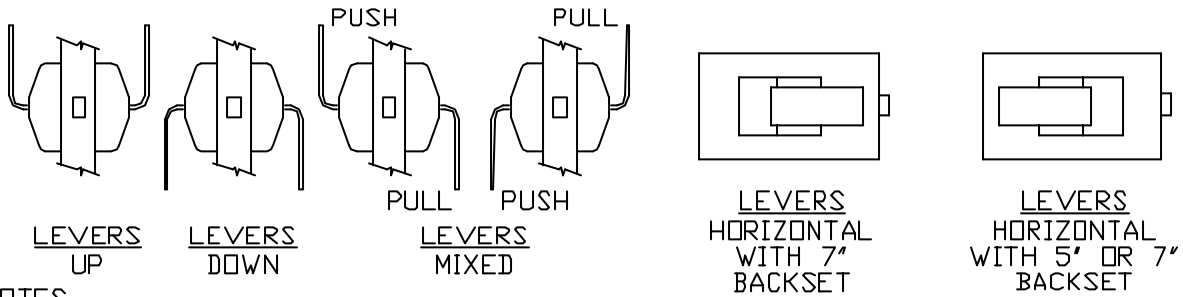
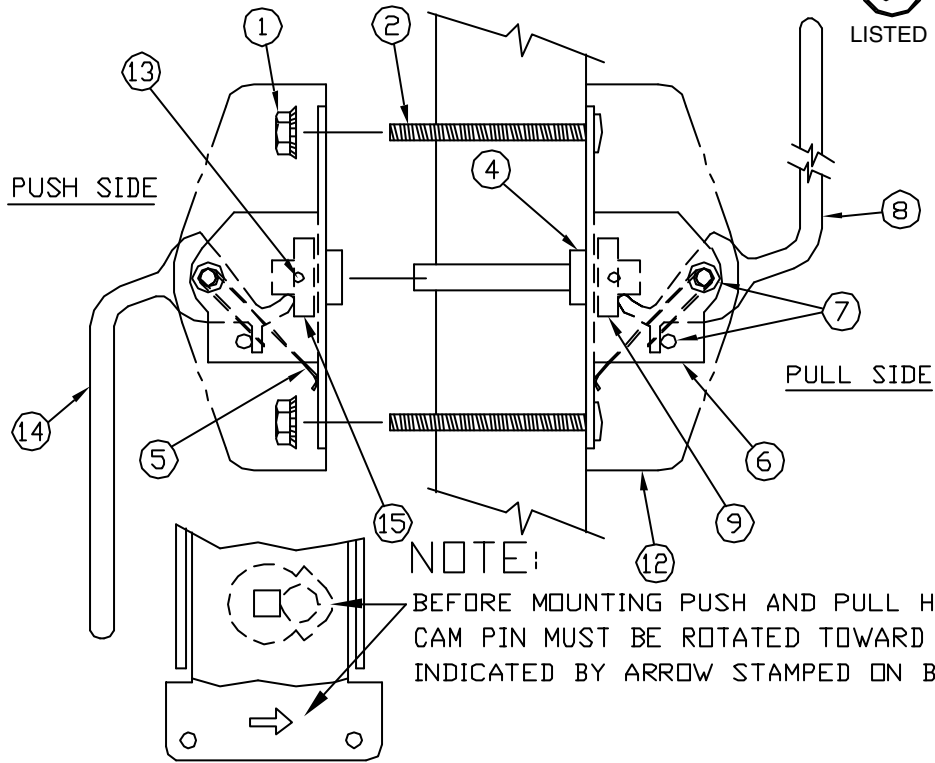
* When ordering **engraved** models, add the letter **P** after the numbers shown below and designate hand.

www.abhmfg.com
E-mail: abhinfo@abhmfg.com
Architectural Builders Hardware Mfg., Inc.
 1222 Ardmore Ave., Itasca, IL 60143
630.875.9900; FAX 800.9FAXABH (932.9224)

© 2005 ABH Mfg., Inc.
 Printed in USA 02/05

ABH®

6000 SERIES PUSH/PULL LATCH



NOTES

1. ALL UNITS ARE SUPPLIED WITH LATCH SHAFT PRESS FIT INTO PULL SIDE ASSEMBLY.
2. VISION LITE MUST BE AT LEAST 6' FROM LATCH PREP.

ITEM	QTY	PART	ITEM	QTY	PART
1	4	10-32 KEPS NUT	9	1	CAM ASSEMBLY (MALE)
2	4	10-32x2-3/4" PH. PAN HD. M.S.	10		
3			11		
4	2EA	WASHERS & C-RING	12	2	COVER
5	2	SPRING	13	4	8-32 X 3/8" F.H.M.S.
6	2	MOUNTING BRACKET	14	1	PUSH SIDE HANDLE
7	4EA	HANDLE SHAFT & COTTER PIN	15	1	CAM ASSEMBLY (FEMALE)
8	1	PULL SIDE HANDLE			

